

Sharawadgi (Gracious disorder)

"Old poem" (1st c. BC?)

tr. Arthur Waley [1918]

3. Old poem

PETER BIRD

Andante (♩ = 92) *mf* *mp*

TENOR At fif- teen I__ went with the ar - my; At four- score__

Flute *p*

PIANO *p* *pp*

Red.

8 *mf*

T. I__ came home. On the way, met a man from the vil - age; I asked him,

Fl. *mp* *mp*

PNO. *p*

16 *mp* *mf*

T. Who was__ left__ at home?

B. "That, ov - er there is your house,

Fl. *mp*

PNO. *p*

Red.

24 *rit.*

S. *mf* Rab - bits ran in at the dog -

A. *mp* Rab- bits_ ran_ in_ at_ the_ dog -

B. all cov - er'd ov - er_ with trees and brush."

Fl. *mp*

PNO. *rit.* *mp*

Ped. Ped. Ped. Ped. Ped.

31 *mf* Pheas - ants flew down. *mf*

S. hole. Pheas ants flew down from the roof - beams. In the court-yard was wild

A. *mf* hole. Pheas - ants flew down from the roof - beams. In the court-yard was wild

Fl. *mp*

PNO. *mf*

Ped. Ped. Ped. Ped. Ped. Ped.

3

Adagio (♩ = 68)

Adagio (♩ = 68)

55 *mf* *mp* *p* high part solo tutti div.

S. por - ridge are both cooked; but no one's here to eat them with...

A. *mp* *p* por - ridge are both cooked; but no one's here to eat them with...

T. *mp* *p* por - ridge are both cooked; but no one's here to eat them with...

B. *mp* *p* por - ridge are both cooked; but no one's here to eat them with...

Fl. *mf* *mp* *p*

PNO. *mf* *mp* *p*

Ped.

63

mp

S. I went out and looked to the East, _____

pp Ah, _____ Ah, _____ *mf* While

A. Ah, _____ Ah, _____ *mf* While

T. Ah _____ While

B. Ah, _____ Ah, _____

Fl. *pp*

PNO. *pp*

Red.

70

mp

S. Tears fell and wet _____ my clothes. _____

mp *p* tears fell and wet _____ my clothes. _____

A. tears fell and wet _____ my clothes. _____

T. tears fell and wet _____ my clothes. _____

B. *mp* *mp* *p* While_ tears fell and wet _____ my clothes. _____

Fl. *p* *mp*

To Gustav Mahler

Sharawadgi (Gracious disorder)

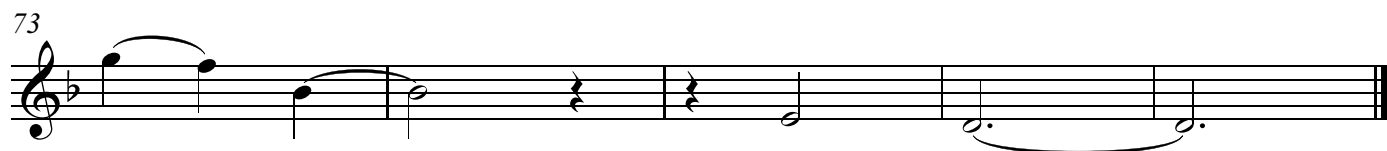
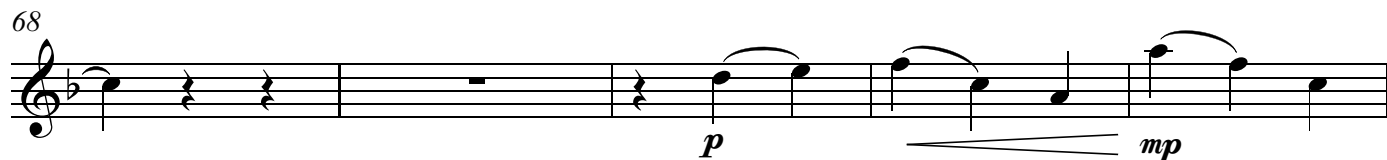
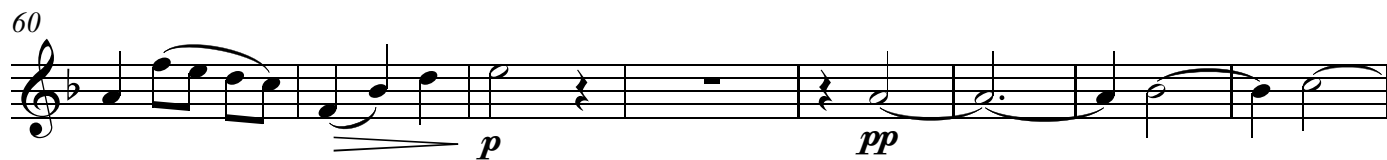
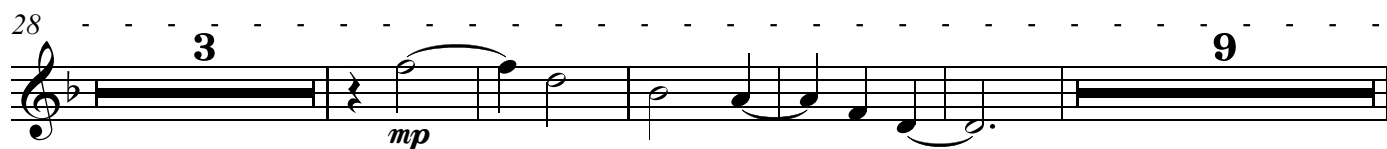
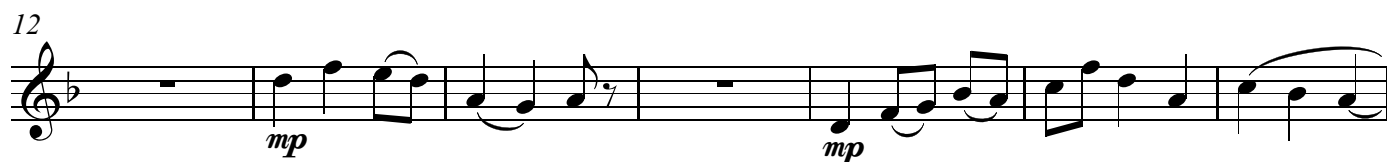
"Old poem" (1st c. BC?)

3. Old poem

tr. Arthur Waley [1918]

PETER BIRD

Andante (♩ = 92)



To Gustav Mahler

Sharawadgi (Gracious disorder)

3. Old poem

"Old poem" (1st c. BC?)

tr. Arthur Waley [1918]

PETER BIRD

Andante (♩ = 92)

Measures 1-6 of the piece. The music is in 3/4 time with a key signature of one flat (B-flat). The tempo is Andante (♩ = 92). The first system shows measures 1-6. The right hand plays a melody of eighth and sixteenth notes, while the left hand provides a harmonic accompaniment with dotted half notes. Dynamics include *p* (piano) and *pp* (pianissimo). Pedal points are indicated with 'Ped.' and a line.

Measures 7-14 of the piece. The right hand continues the melodic line, and the left hand provides a steady accompaniment. A dynamic of *p* (piano) is marked in measure 10. Pedal points are indicated with 'Ped.' and a line.

Measures 15-23 of the piece. Measures 15-16 feature a double bar line and a '2' above and below, indicating a second ending. The right hand has a melodic phrase, and the left hand has a harmonic accompaniment. A dynamic of *p* (piano) is marked in measure 18. Pedal points are indicated with 'Ped.' and a line.

Measures 24-30 of the piece. Measure 24 is marked with 'rit.' (ritardando). The right hand has a melodic phrase, and the left hand has a harmonic accompaniment. A dynamic of *mp* (mezzo-piano) is marked in measure 26. Pedal points are indicated with 'Ped.' and a line.

Measures 31-35 of the piece. The right hand has a melodic phrase, and the left hand has a harmonic accompaniment. A dynamic of *mf* (mezzo-forte) is marked in measure 32. Pedal points are indicated with 'Ped.' and a line.

V.S.

37

mp *p*

Ped. Ped. Ped.

45 - Adagio (♩ = 68)

mp

52

mf *mp*

60

p *pp*

Ped.

66

p

Ped.